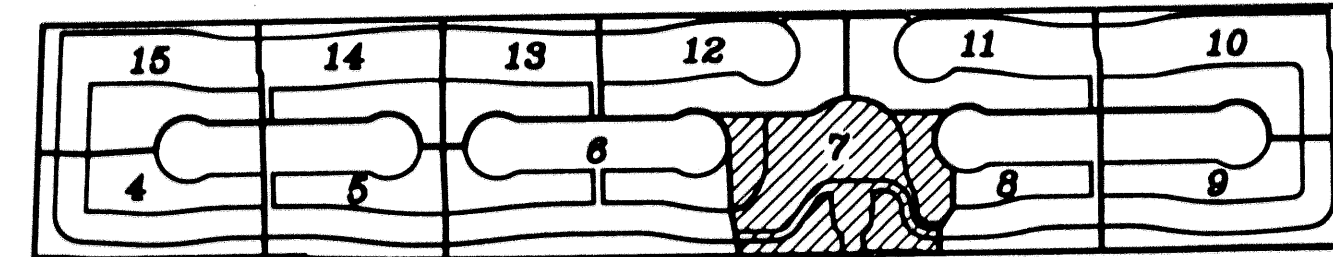


BUENA VIDA
BEING A REPLAT OF A PORTION OF BLOCKS 16 AND 17 OF PALM BEACH FARMS COMPANY
PLAT No. 3, AS RECORDED IN PLAT BOOK 2, PAGES 45 THROUGH 54 OF THE PUBLIC
RECORDS OF PALM BEACH COUNTY, FLORIDA, IN PART OF SECTIONS 7 AND 8, TOWNSHIP
44 SOUTH, RANGE 42 EAST, VILLAGE OF WELLINGTON, PALM BEACH COUNTY, FLORIDA.
SHEET 7 OF 15
MARCH 2002



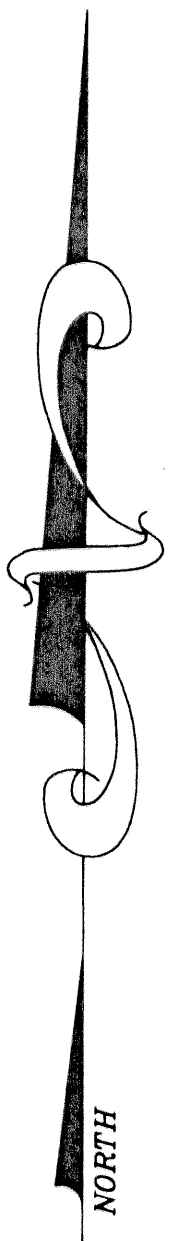
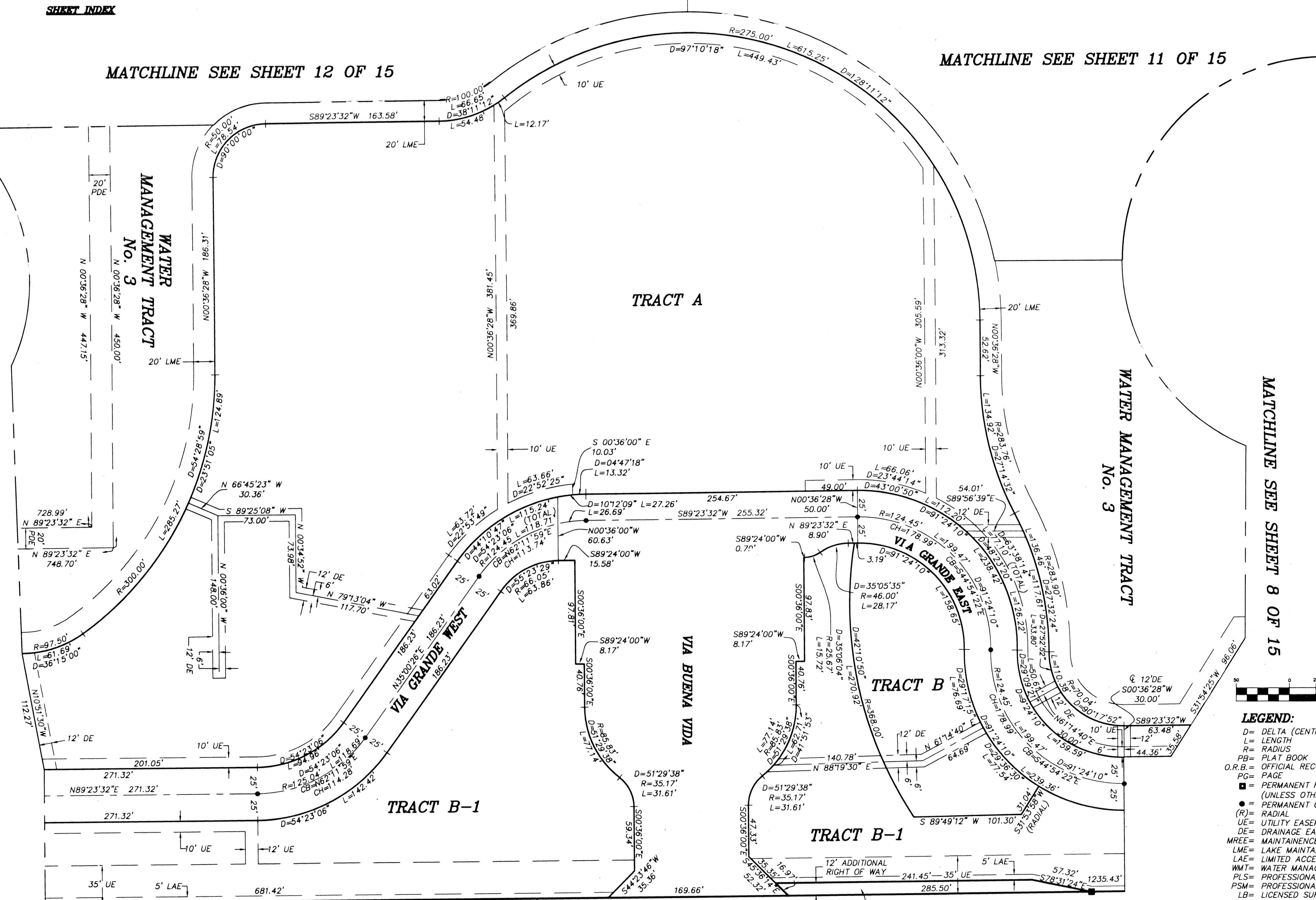
SHEET INDEX

MATCHLINE SEE SHEET 12 OF 15

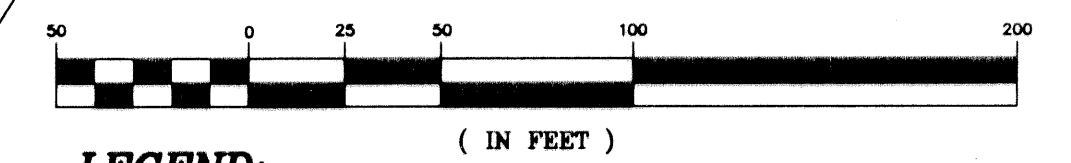
MATCHLINE SEE SHEET 11 OF 15

MATCHLINE SEE SHEET 6 OF 15

MATCHLINE SEE SHEET 8 OF 15



GRAPHIC SCALE



- LEGEND:**
 (IN FEET)
 1 inch = 50 ft.
- D= DELTA (CENTRAL ANGLE)
 - L= LENGTH
 - R= RADIUS
 - PB= PLAT BOOK
 - O.R.B.= OFFICIAL RECORD BOOK
 - PG= PAGE
 - = PERMANENT REFERENCE MONUMENT "LB 4318" (UNLESS OTHERWISE NOTED)
 - = PERMANENT CONTROL POINT "LB 4318"
 - (R)= RADIAL
 - UE= UTILITY EASEMENT
 - DE= DRAINAGE EASEMENT
 - MREE= MAINTENANCE & ROOF EAVE EASEMENT
 - LME= LAKE MAINTAINANCE EASEMENT
 - LAE= LIMITED ACCESS EASEMENT
 - WMT= WATER MANAGEMENT TRACT
 - PLS= PROFESSIONAL LAND SURVEYOR
 - PSM= PROFESSIONAL SURVEYOR & MAPPER
 - LB= LICENSED SURVEYING & MAPPING BUSINESS
 - CH= CHORD DISTANCE
 - CB= CHORD BEARING
 - LWDD= LAKE WORTH DRAINAGE DISTRICT
 - PBC= PALM BEACH COUNTY
 - PDE= PUBLIC DRAINAGE EASEMENT

N 89°23'32" E
3572.01'

NORTH RIGHT OF WAY LINE
PER RPB 2, PG 147

FOREST HILL BOULEVARD
(WIDTH VARIES)



NICK MILLER, INC.
Surveying & Mapping Consultants
SUITE 105
2560 RCA BLVD.
PALM BEACH GARDENS, FLORIDA 33410
TEL 561 627-5200 FAX 561 627-0983
D.B.P.R. LICENSED BUSINESS No. 4318

BUENA VIDA

SHEET NO.

7

SCALE: 1" = 50'

DATE: MARCH 2002

JOB NO. 1008.009

FILE: 1008.09